

Advised Response Structure for COVID-19

Developed by NPTCBC Emergency Planning Team | v8.0 | Date: 21 April 2020



UK

Cabinet Office Briefing Room (COBR)

WALES

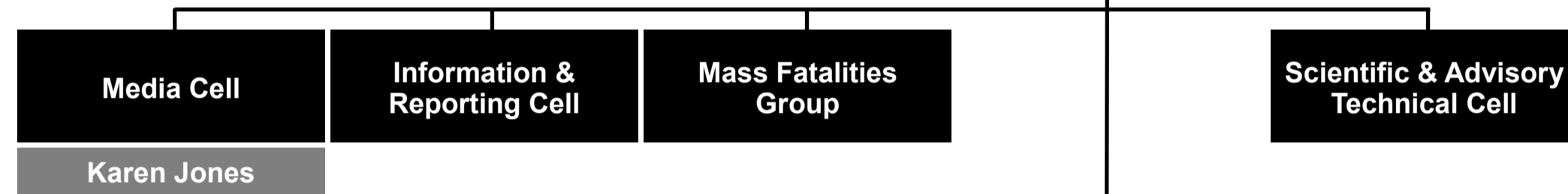
Wales Civil Contingencies Committee

Emergency Co-ordination Centre Wales (ECCW)

LRF

SCG SWLRF

Nicola Pearce **Supported by:** Emergency Planning



TCG SWLRF
Emergency Planning



NPT

NPTCBC IMT

Attended by: CHEX, Asst CHEX, Directors, Heads of Service, Emergency Planning
Supported by: Emergency Planning

CHAIR / LEAD OFFICER:

Logistics & Distribution Group	Warning, Informing & Digital Services Group	Social Services & Health Group	Community Resilience + Humanitarian / Voluntary Assistance Group	Workforce Planning Group	Facilities Cleaning, Deep Cleaning Group	Regulatory Services & Enforcement Group	Key Worker Provision & Vulnerable Learner Support Group	Mass Fatalities & Care of the Dead Group	Financial Resilience Group
Dave Griffiths	Karen Jones	Andrew Jarrett <i>(supported by Angela Thomas)</i>	Karen Jones	Nicola Pearce	Simon Brennan <i>TBC</i>	Ceri Morris <i>(supported by Craig Griffiths)</i>	Aled Evans	Craig Griffiths & Mike Roberts	Hywel Jenkins / Huw Jones

Attended by: CHEX, Asst CHEX, Directors, Heads of Service, Services, Managers, Relevant Officers (attendees of groups based on service / individual specialism)

- | | | | | | | | | | |
|---|--|--|--|---|---|---|--|---|--|
| <ul style="list-style-type: none"> Transport Unit Human Resources Training & Development Facilities | <ul style="list-style-type: none"> Digital Services Communications Emergency Planning | <ul style="list-style-type: none"> Adult Services Child Services | <ul style="list-style-type: none"> Communications Social services Community Safety Emergency Planning Education | <ul style="list-style-type: none"> Human Resources Asst. CHEX | <ul style="list-style-type: none"> Facilities Access Managed Services | <ul style="list-style-type: none"> Environmental Health Trading Standards Legal Licensing Community Safety | <ul style="list-style-type: none"> Education services | <ul style="list-style-type: none"> Legal Finance Registrars Emergency Planning Crematorium Parks & Cemeteries | <ul style="list-style-type: none"> Financial Services |
|---|--|--|--|---|---|---|--|---|--|